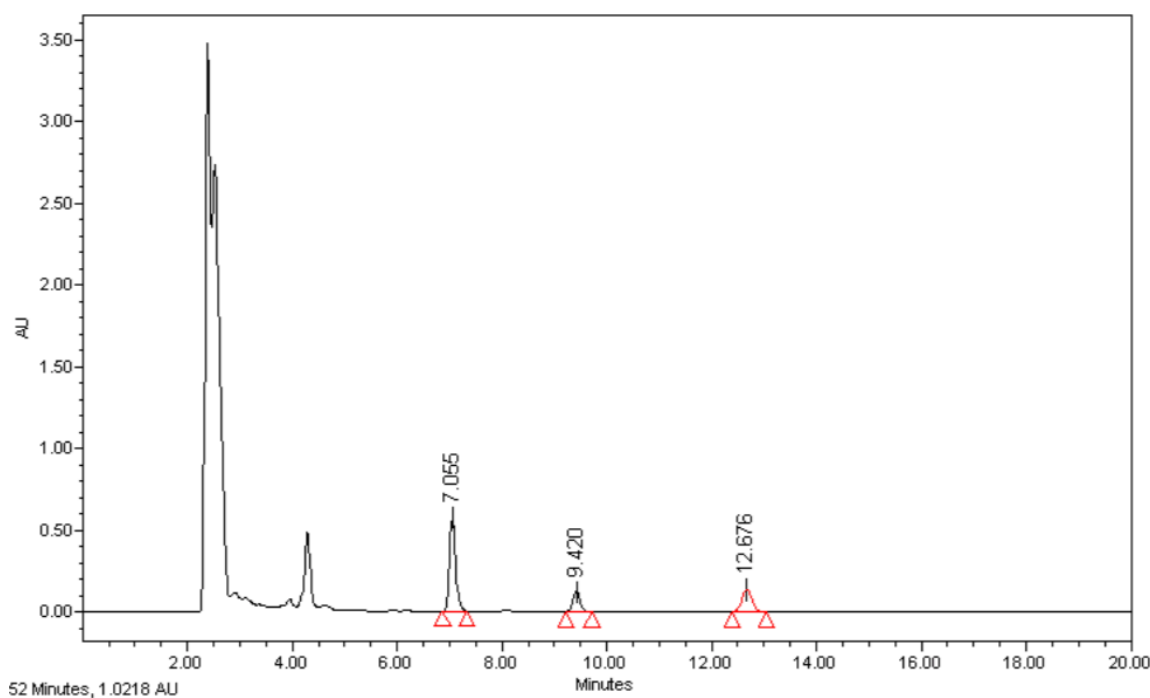


## FLOCHROM<sup>®</sup> MITOTANE /DDE IN PLASMA

Mitotane, an analogue of DDT insecticide, is the drug of choice for unresectable, metastatic or recurrent adrenocortical carcinoma (ACC) and, due to high rates of recurrence, it is also suggested as adjuvant therapy after tumor resection.

The antitumor effect of Mitotane is related to the maintenance of adequate plasma drug levels. Monitoring the plasma concentration of Mitotane during treatment allows the most rapid achievement of the therapeutic level (14-20 µg/ml), as well as the minimization of adverse effects due to an excessively high plasma level. Intra-adrenal metabolic transformation is essential for the therapeutic effect of Mitotane, which is metabolized in DDE and DDA.

Long-term follow-up studies suggest that DDE plasma concentration is closely related to improvement and clinical remission.



Mitotane: 7.05 min DDE: 9.42 min Internal Standard: 12.67 min

## Required instruments

Data acquisition time: 15 min

Injection volume: 50  $\mu$ l

Flow rate: 1 ml/min

Temperature: 35 °C

UV detector: 226 nm

## Sample preparation

- Take 200  $\mu$ l plasma (sample, calibrator or control).
- Add 20  $\mu$ l internal standard and vortex.
- Add 200  $\mu$ l precipitant solution and vortex.
- Centrifuge at 12000 rpm for 10 min.
- Collect 150  $\mu$ l supernatant and transfer into a vial.
- Inject 50  $\mu$ l and analyze with HPLC.